

SCIMITAR FLOOD SERIES

Ultra High Lumen Output Scimitar LED Flood Light



CENTER COURT
LIGHTING

SPECIFICATIONS

APPLICATION The high lumen output luminaire is designed to be a replacement for HID fixtures up to 1500W. It is optimal for lighting applications where long life, low maintenance, and consistent color rendering is required. Areas with limited accessibility due to fixture location or where heavy pedestrian or vehicle traffic makes maintenance difficult are ideal applications. The high wattage/lumen output allows the fixture to be used for parking, restaurant, quick service, shopping centers or sports lighting applications.

CONSTRUCTION The heavy duty housing is constructed of die cast aluminum with heat dissipating fins. The optical assemblies are sealed in place using a silicone gasket for weather tight protection. Modular LED system for ease of maintenance. ETL listed for wet locations (IP65). Additional IP66 rating available upon request. Fixture can accommodate advanced wireless control,

management and reporting systems for outdoor lighting.

FINISH A corrosion-resistant epoxy coat layer that forms a uniform and all-encompassing protective barrier is applied to the fixtures prior to electrostatically applying a super durable polyester powder coat finish. Standard colors available: Black, Bronze, US Green, White. Custom colors available upon request.

OPTICAL SYSTEM Made with a state of the art UV stabilized acrylic high performance refractive optical assemblies that use high transmittance materials to achieve precise photometric distributions. Available in Type V Narrow, V Medium, V Wide and Narrow Spot beam configurations. The full cutoff fixture is Star Light Friendly (meets or exceeds Dark Sky requirements) in the horizontal position.

ELECTRICAL SYSTEM Available in up to a 4 module LED system in 5000K-70 CRI Cool White (+/- 500K) or 4000K-70 CRI Neutral White color temperatures. Consult factory for high CRI (90+) model availability. Available with 100-300V 50/60 Hz or 347V-480V. LED's rated for over 50,000 hours at 25°C ambient temperature. 0-10V dimming. Built-in surge protection up to 10 kV. Built-in Active PFC Function >95% Full load. LED Power Supply conforms to UL8750 standards.

MOUNTING Standard mounting option is a (2AF) 2" Adjustable Slip Fitter. Additional mounting options, including a (B15) Trunnion Mount are available for custom applications.

LISTINGS LED Power Supply listed for wet locations (IP65). Meets US and Canadian safety standards. -40°C to 50°C ambient operation. RoHS Compliant. Meets or exceeds DLC requirements.



4 Module LSMA BK

2 Module Unit | Approx. Weight- 37 lbs.
4 Module Unit | Approx. Weight- 55 lbs.

ORDERING INFORMATION

EXAMPLE: **LSMA-4-C-85L-T4-1-BK-BTEC**

LSMA	4	C	85L	T4	1	BK	BTEC
SERIES	MODULE UNIT (SIZE) ¹	COLOR TEMP	NOMINAL LUMENS ³	OPTICS ³	VOLTAGE	FINISH	OPTIONS
	2 2 Mod Unit 4 4 Mod Unit	N Neutral White (4000K) C Cool White (5000K)	23L 23,000 Lumens 25L 25,000 Lumens 28L 28,000 Lumens 30L 30,000 Lumens 33L 33,000 Lumens 35L 35,000 Lumens 38L 38,000 Lumens 40L 40,000 Lumens 43L 43,000 Lumens 45L 45,000 Lumens 50L 50,000 Lumens 55L 55,000 Lumens 60L 60,000 Lumens 65L 65,000 Lumens 70L 70,000 Lumens 75L 75,000 Lumens 80L 80,000 Lumens 85L 85,000 Lumens 90L 90,000 Lumens	NSP Narrow Spot TSN Type V Narrow T5M Type V Medium T5W Type V Wide T4 Type IV T4T Type IV Tennis	1 Multi-Volt ¹ 2 347~480V	BK Black BZ Bronze GR US Green WH White SP Special ²	IP66 Additional IP66 Fixture Rating B15 ⁵ Trunnion Mount PC2 480V Twist-Lock Photocell PC6 ⁴ Multi-Tap (105-285V) Twist-Lock Photocell PCR7 ⁴ 7-Pin Twist-Lock Photocell Receptacle ANSI C136.41 and Receptacle Shorting Cap BTEC Integrated Bluetooth Control Module Casambi Ready Mesh Network IMS ⁶ Fixture Mount Passive Infrared Motion Sensor (IMS Lenses Below, Ordered Separately) TLWSFSP-L3 ⁷ 360° lens, maximum coverage 40' diameter from 20' height (IMS) TLWSFSP-L7 ⁷ 360° lens, maximum coverage 100' diameter from 40' height (IMS)

ACCESSORIES (Order as separate line items)

- SLSMA**⁸ Front Light Shield
- S213**³ Angled Black Light Shield
- S237**⁸ Horizontal Shield
- S238**⁸ Vertical Shield
- S240**⁸ Three Sided Visor Shield
- S241**⁸ Three Sided Full Shield
- S242**⁸ Four Sided Shield

NOTES

- ¹ = Multi-Volt is an auto ranging power supply from 100V to 300V input.
- ² = Custom RAL color matching is available. Contact your sales representative for additional info.
- ³ = Order one per LED brick. Field installed.
- ⁴ = Photocell Receptacle must be installed at the factory. No field installation.
- ⁵ = Ordering this option will replace the standard (2AF) 2" Adjustable Slip Fitter.
- ⁶ = TLWSFSP-L3 or L7 Lens must be ordered along with this sensor. (see pg. 4)
- ⁷ = Photo control shield available upon request. Len's must be ordered with IMS option. (see pg. 4)
- ⁸ = Available for 4 module only. Field installed.
- ⁹ = Reference Lumen Chart on Pages 4 & 5 to identify which **Module Unit (size)** to choose depending on the **Nominal Lumens** and **Optic** Types chosen.
Some combinations may deviate from ordering logic shown above.

FIXTURE WEIGHTS (APPROX)		
Fixture Configuration	2 Module	4 Module
Weight (lbs)	37 lbs	55 lbs

PROUDLY BUILT BY

AMERICANS
For Americans
IN THE
USA

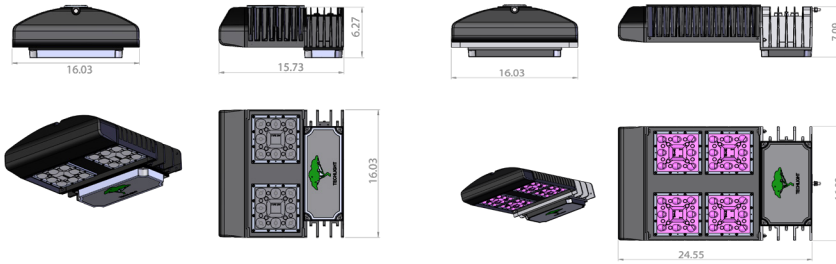
Techlight supports American families making quality products everyday.

SCIMITAR FLOOD SERIES

Ultra High Lumen Output Scimitar LED Flood Light

AVAILABLE FIXTURE DIMENSIONS

Dimensions shown are for fixture bodies only. Mounting options must be ordered separately.



Dimensions shown for 2 Module Unit

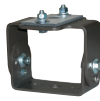
Dimensions shown for 4 Module Unit

FIXTURE & MOUNTING ACCESSORIES

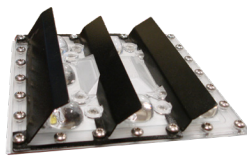
2AF (Standard)
2° Adjustable Slip Fitter



B15° (Option)
Trunnion Mount



S213³
Angled Back Light Shield



PCR7⁴
7-Pin Twist-Lock Photocell Receptacle ANSI C136.41 and Receptacle Shorting Cap

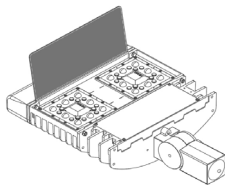


PC2
480V Twist-Lock

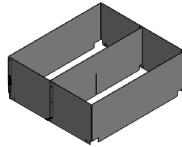


PC6⁴
Multi-Tap (105-285V) Twist-Lock Photocell

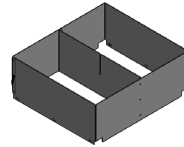
SLSMA⁸
Front Light Shield



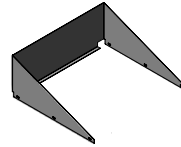
S237⁸
Horizontal Shield for 4 brick



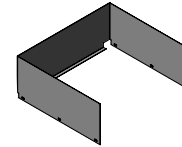
S238⁸
Vertical Shield for 4 brick



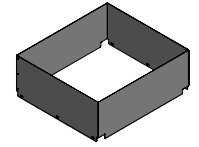
S240⁸
3 Sided Angled Shield for 4 brick



S241⁸
3 Sided Full Shield for 4 brick



S242⁸
Four Sided Shield for 4 brick



EPA RATINGS (ft²)

EPA's shown below include both the fixture and the mounting apparatus.

LSMA 2 (Two Module)

CATALOG NUMBER	DESCRIPTION	0°	20°	30°	45°	60°	70°	90°
TVA4/TVA5	Single Vertical Tenon	0.7	1.0	1.3	1.5	1.7	1.8	2.1
TV2	Two In-Line Tenons	2.2	3.0	3.4	3.9	4.2	4.4	5.1
TV3	Three In-Line Tenons	3.7	4.7	5.4	6.2	6.7	6.9	7.9
TV3120	Three Tenons at 120°	2.9	3.7	4.0	4.4	4.7	4.9	5.3
TV4	Four In-Line Tenons	5.1	6.5	7.4	8.4	9.1	9.4	10.8
TVC4	Four Tenons at 90°	3.7	4.5	5.0	5.5	5.8	6.0	6.7
BH2180	Two In-Line Tenons	1.7	2.5	2.9	3.4	3.7	3.9	4.6
BH3180	Three In-Line Tenons	2.7	3.7	4.4	5.2	5.7	5.9	6.9
BH3120	Three Tenons at 120°	2.5	3.2	3.6	4	4.3	4.4	4.8
BH4180	Four In-Line Tenons	3.7	5.2	6.1	7.1	7.7	8	9.5
BH490	Four Tenons at 90°	3.1	3.9	4.4	4.9	5.2	5.4	6.1

LSMA 4 (Four Module)

CATALOG NUMBER	DESCRIPTION	0°	20°	30°	45°	60°	70°	90°
TVA4/TVA5	Single Vertical Tenon	1	1.3	1.7	2.1	2.4	2.5	3.1
TV2	Two In-Line Tenons	2.8	3.5	4.2	5.1	5.6	5.9	7.1
TV3	Three In-Line Tenons	4.6	5.6	6.6	7.9	8.8	9.2	10.9
TV3120	Three Tenons at 120°	3.4	4.5	5	5.8	6.4	6.6	7.3
TV4	Four In-Line Tenons	6.3	7.6	9	10.7	11.9	12.4	14.7
BH2180	Two In-Line Tenons	2.3	3	3.7	4.6	5.1	5.4	6.6
BH3180	Three In-Line Tenons	3.6	4.6	5.6	6.9	7.8	8.2	9.9
BH3120	Three Tenons at 120°	3	4.1	4.5	5.3	5.9	6.2	6.8
BH4180	Four In-Line Tenons	5	6.3	7.7	9.4	10.6	11.1	13.4
BH490	Four Tenons at 90°	3.7	5.1	5.8	6.6	7.2	7.5	8.6

SCIMITAR FLOOD SERIES

Legend Color Codes (LEFT) Represent the **Module Unit Size**, per Nominal Lumen/Optic Type.

2 Module Unit - Housing Height: 6.27" Length & Width: 15.73 x 16.02
 4 Module Unit - Housing Height: 7.09" Length & Width: 24.55 x 16.03

LUMEN CHART³

DATA SHOWN REPRESENTS BOTH COOL & NEUTRAL WHITE CCT (5000K & 4000K)

	N5P	T5M	T5N	T5W	T4	T4T
23L	22,481 Lm	23,805 Lm	22,738 Lm	23,687 Lm	23,364 Lm	24,052 Lm
	157W 143 Lm/W	147W 162 Lm/W	152W 150 Lm/W	147W 161 Lm/W	147W 159 Lm/W	147W 164 Lm/W
25L	B5-U0-G2	B4-U0-G1	B5-U0-G3	B5-U0-G3	B3-U0-G3	B3-U0-G2
	25,066 Lm	25,275 Lm	24,769 Lm	25,149 Lm	24,806 Lm	25,537 Lm
28L	179W 140 Lm/W	157W 161 Lm/W	168W 147 Lm/W	157W 160 Lm/W	157W 158 Lm/W	157W 163 Lm/W
	B5-U0-G2	B4-U0-G1	B5-U0-G3	B5-U0-G3	B3-U0-G3	B3-U0-G2
30L	27,611 Lm	27,458 Lm	27,441 Lm	27,322 Lm	27,658 Lm	27,743 Lm
	200W 138 Lm/W	173W 159 Lm/W	190W 144 Lm/W	173W 158 Lm/W	179W 155 Lm/W	173W 160 Lm/W
33L	B5-U0-G2	B4-U0-G1	B5-U0-G3	B5-U0-G3	B3-U0-G3	B4-U0-G3
	30,116 Lm	30,331 Lm	30,071 Lm	30,180 Lm	29,769 Lm	29,924 Lm
35L	222W 136 Lm/W	195W 156 Lm/W	211W 143 Lm/W	195W 155 Lm/W	195W 153 Lm/W	190W 158 Lm/W
	B5-U0-G2	B5-U0-G1	B5-U0-G3	B5-U0-G4	B3-U0-G3	B4-U0-G3
38L	32,581 Lm	32,456 Lm	32,660 Lm	32,294 Lm	32,544 Lm	32,792 Lm
	244W 134 Lm/W	211W 154 Lm/W	233W 140 Lm/W	211W 153 Lm/W	217W 150 Lm/W	211W 155 Lm/W
40L	B5-U0-G3	B5-U0-G2	B5-U0-G3	B5-U0-G4	B4-U0-G3	B4-U0-G3
	35,007 Lm	35,205 Lm	35,207 Lm	35,075 Lm	35,275 Lm	34,914 Lm
43L	266W 132 Lm/W	233W 151 Lm/W	255W 138 Lm/W	233W 151 Lm/W	238W 148 Lm/W	227W 154 Lm/W
	B5-U0-G3	B5-U0-G2	B5-U0-G3	B5-U0-G4	B4-U0-G3	B4-U0-G3
45L	37,983 Lm	37,316 Lm	37,713 Lm	37,810 Lm	37,962 Lm	37,703 Lm
	293W 130 Lm/W	249W 150 Lm/W	277W 136 Lm/W	255W 148 Lm/W	260W 146 Lm/W	249W 151 Lm/W
50L	B5-U0-G3	B5-U0-G2	B5-U0-G3	B5-U0-G4	B4-U0-G4	B4-U0-G3
	40,319 Lm	40,031 Lm	40,178 Lm	39,833 Lm	39,949 Lm	39,765 Lm
55L	316W 128 Lm/W	271W 148 Lm/W	299W 134 Lm/W	271W 147 Lm/W	277W 144 Lm/W	266W 150 Lm/W
	B5-U0-G3	B5-U0-G2	B5-U0-G3	B5-U0-G4	B4-U0-G4	B4-U0-G3
60L	42,348 Lm	42,702 Lm	42,600 Lm	42,490 Lm	42,560 Lm	42,475 Lm
	294W 144 Lm/W	293W 146 Lm/W	321W 133 Lm/W	293W 145 Lm/W	299W 142 Lm/W	288W 148 Lm/W
65L	B5-U0-G3	B5-U0-G2	B5-U0-G3	B5-U0-G4	B4-U0-G4	B4-U0-G3
	44,962 Lm	45,329 Lm	45,477 Lm	45,104 Lm	45,126 Lm	45,139 Lm
70L	315W 143 Lm/W	316W 143 Lm/W	304W 150 Lm/W	316W 143 Lm/W	321W 141 Lm/W	310W 146 Lm/W
	B5-U0-G3	B5-U0-G2	B5-U0-G4	B5-U0-G4	B4-U0-G4	B4-U0-G3
75L	50,132 Lm	50,549 Lm	49,539 Lm	50,298 Lm	49,612 Lm	49,591 Lm
	358W 140 Lm/W	315W 161 Lm/W	336W 147 Lm/W	315W 160 Lm/W	315W 158 Lm/W	304W 163 Lm/W
80L	B5-U0-G3	B5-U0-G2	B5-U0-G4	B5-U0-G5	B4-U0-G4	B4-U0-G3
	55,222 Lm	54,916 Lm	54,882 Lm	54,644 Lm	55,317 Lm	55,486 Lm
85L	401W 138 Lm/W	347W 158 Lm/W	380W 144 Lm/W	347W 158 Lm/W	358W 155 Lm/W	347W 160 Lm/W
	B5-U0-G3	B5-U0-G2	B5-U0-G4	B5-U0-G5	B4-U0-G4	B5-U0-G3
90L	60,232 Lm	60,661 Lm	60,143 Lm	60,360 Lm	59,537 Lm	59,848 Lm
	444W 136 Lm/W	390W 156 Lm/W	423W 142 Lm/W	390W 155 Lm/W	390W 153 Lm/W	380W 158 Lm/W
95L	B5-U0-G3	B5-U0-G2	B5-U0-G4	B5-U0-G5	B4-U0-G5	B5-U0-G3
	65,163 Lm	64,911 Lm	65,320 Lm	64,589 Lm	65,088 Lm	65,584 Lm
100L	488W 134 Lm/W	423W 154 Lm/W	466W 140 Lm/W	423W 153 Lm/W	434W 150 Lm/W	423W 155 Lm/W
	B5-U0-G3	B5-U0-G2	B5-U0-G5	B5-U0-G5	B5-U0-G5	B5-U0-G3
105L	70,014 Lm	70,499 Lm	70,415 Lm	70,149 Lm	70,550 Lm	69,827 Lm
	532W 132 Lm/W	466W 151 Lm/W	510W 138 Lm/W	466W 151 Lm/W	477W 148 Lm/W	455W 154 Lm/W
110L	B5-U0-G4	B5-U0-G2	B5-U0-G5	B5-U0-G5	B5-U0-G5	B5-U0-G4
	74,785 Lm	74,631 Lm	75,426 Lm	75,620 Lm	74,589 Lm	75,405 Lm
115L	576W 130 Lm/W	499W 150 Lm/W	554W 136 Lm/W	510W 148 Lm/W	510W 146 Lm/W	499W 151 Lm/W
	B5-U0-G4	B5-U0-G3	B5-U0-G5	B5-U0-G5	B5-U0-G5	B5-U0-G4
120L	80,637 Lm	80,063 Lm	80,355 Lm	79,665 Lm	79,898 Lm	79,530 Lm
	632W 128 Lm/W	543W 147 Lm/W	598W 134 Lm/W	543W 147 Lm/W	554W 144 Lm/W	532W 150 Lm/W
125L	B5-U0-G4	B5-U0-G3	B5-U0-G5	B5-U0-G5	B5-U0-G5	B5-U0-G4
	85,405 Lm	85,201 Lm	85,201 Lm	84,981 Lm	85,119 Lm	84,949 Lm
130L	N/A	85,405 Lm	85,201 Lm	84,981 Lm	85,119 Lm	84,949 Lm
	N/A	587W 146 Lm/W	643W 133 Lm/W	587W 145 Lm/W	598W 142 Lm/W	576W 148 Lm/W
135L	N/A	B5-U0-G3	B5-U0-G5	B5-U0-G5	B5-U0-G5	B5-U0-G4
	N/A	89,352 Lm	N/A	90,207 Lm	90,252 Lm	90,279 Lm
140L	N/A	620W 144 Lm/W	N/A	632W 143 Lm/W	643W 140 Lm/W	620W 146 Lm/W
	N/A	B5-U0-G3	N/A	B5-U0-G5	B5-U0-G5	B5-U0-G4

SCIMITAR FLOOD SERIES

Ultra High Lumen Output Scimitar LED Flood Light

FIXTURE MOUNT SENSOR (IMS)

FEATURES & SPECIFICATIONS

APPLICATION — The sensor is ideal for areas such as parking facilities, gas stations, pedestrian pathways, and warehouses. A choice of four lenses ensures complete coverage for mounting heights up to 40'.

OPERATION — Typically, the sensor ramps lighting On to the selected High mode level when motion is detected and the ambient light level is below the hold off setpoint. After the sensor stops detecting movement and the time delay elapses, lights fade to the Low mode level. If there is no motion during the subsequent cut off time delay, the lights will turn Off. For dusk to dawn control, the integral photocell can switch the lights On and Off based on the ambient light level so that lighting remains on overnight even without motion detection.

FEATURES —

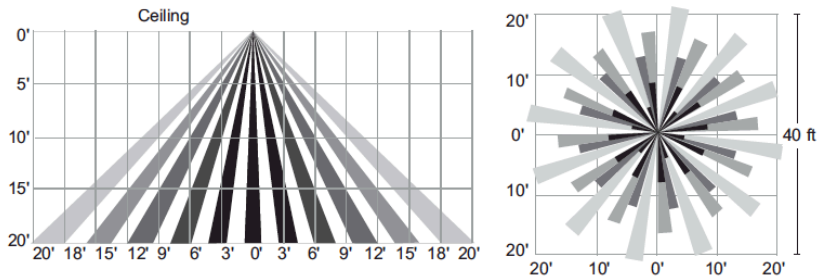
- Provides line voltage On/Off switching
- High and low modes fully adjustable from 0 to 10V
- Time delay from 5 to 30 minutes
- Optional cut off delay
- Adjustable ramp up and fade down times
- Optional daylighting setpoints feature automatic calibration, or permit manual adjustment
- Polycarbonate construction; flame retardant, UV resistant, impact resistant, recyclable
- UL244A and UL508



SENSOR LENSES FIELD OF VIEW

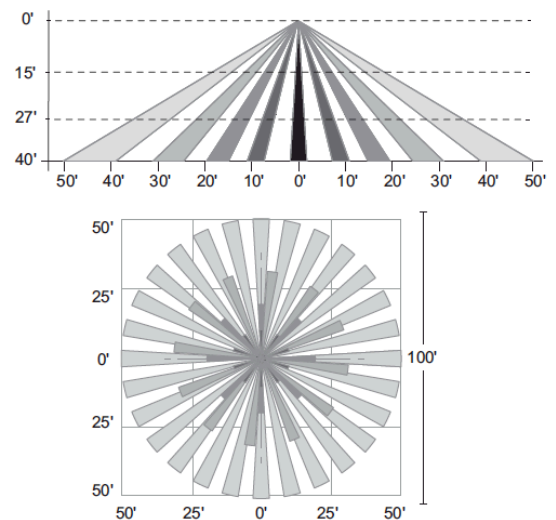
TLWSFSP-L3⁷

360° lens, maximum coverage 40' diameter from 20' height



TLWSFSP-L7⁷

360° lens, maximum coverage 100' diameter from 40' height



⁷ = Black lens cover and Photo control shield available upon request. Len's must be ordered with IMS option.

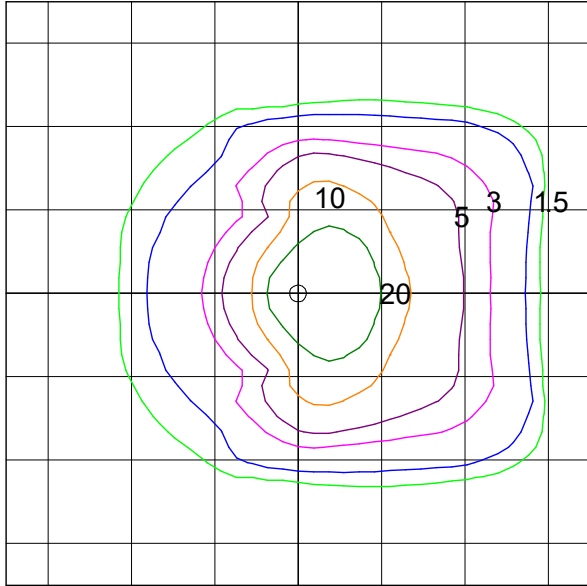
SCIMITAR FLOOD SERIES

Ultra High Lumen Output Scimitar LED Flood Light

PHOTOMETRY

LSMT 4 C 90L T4

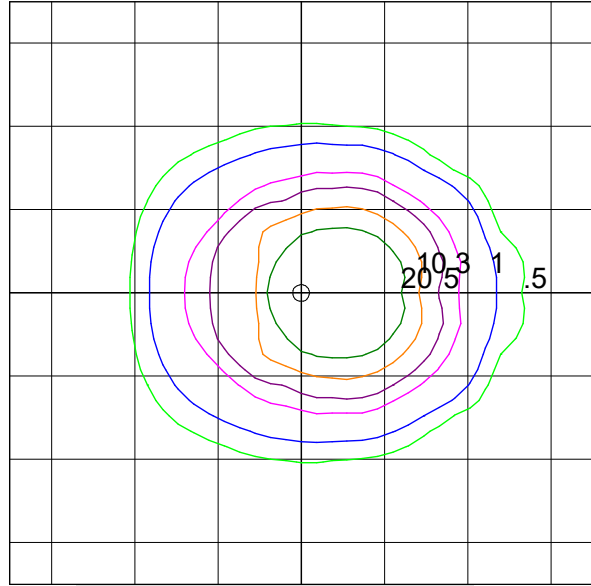
Type IV Optical Assembly
4 Module, Cool White



TECHLIGHT
LSMT C 90L T4
Horizontal Footcandles
Scale: 1 Inch = 25 Ft.
Light Loss Factor = 1.00
Lumens Per Lamp = N.A. (absolute photometry)
Luminaire Lumens = 90248
Mounting Height = 23.00 Ft
Maximum Calculated Value = 54.37 Fc
Arrangement: Single

LSMA 4 C 90L T4T

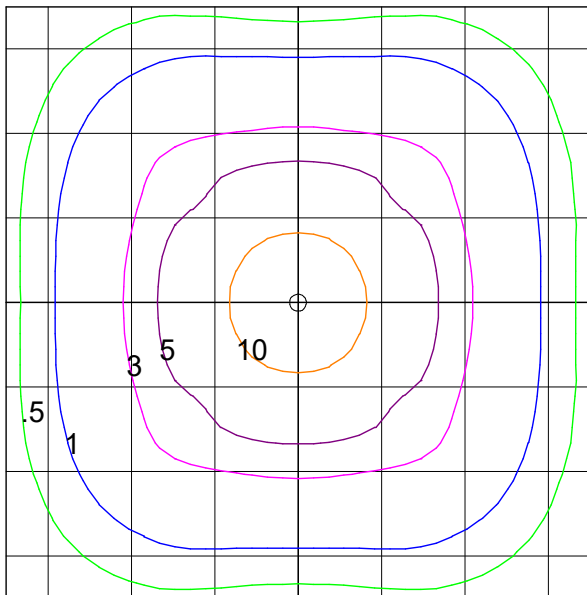
Type IV Tennis Optical Assembly
4 Module, Cool White



TECHLIGHT
LSMT C 90L T4T
Horizontal Footcandles
Scale: 1 Inch = 25 Ft.
Light Loss Factor = 1.00
Lumens Per Lamp = N.A. (absolute photometry)
Luminaire Lumens = 90279
Mounting Height = 23.00 Ft
Maximum Calculated Value = 75.41 Fc
Arrangement: Single

LSMT 4 C 90L T5W

Type V Wide Optical Assembly
4 Module, Cool White



TECHLIGHT
LSMT C 90L T5W
Horizontal Footcandles
Scale: 1 Inch = 25 Ft.
Light Loss Factor = 1.00
Lumens Per Lamp = N.A. (absolute photometry)
Luminaire Lumens = 90208
Mounting Height = 23.00 Ft
Maximum Calculated Value = 14.86 Fc
Arrangement: Single



AMPERAGE DRAW CHART

Wattage Range	120V Amps	208V Amps	240V Amps	277V Amps	347V Amps	480V Amps
101-150W	1.3	0.7	0.6	0.5	0.4	0.3
151-200W	1.7	1	0.8	0.7	0.6	0.4
201-250W	2.1	1.2	1	0.9	0.7	0.5
251-300W	2.5	1.4	1.3	1.1	0.9	0.6
301-350W	2.9	1.7	1.5	1.3	1	0.7
351-400W	3.3	1.9	1.7	1.4	1.2	0.8
401-450W	3.8	2.2	1.9	1.6	1.3	0.9
451-500W	4.2	2.4	2.1	1.8	1.4	1
501-550W	4.6	2.6	2.3	2	1.6	1.1
551-600W	5	2.9	2.5	2.2	1.7	1.3
601-650W	5.4	3.1	2.7	2.3	1.9	1.4